



BUILDING. PATHWAYS. HOME.



FOUNDATIONS
PROJECT

A CAPITAL INITIATIVE OF THE COALITION



The Story Forward

Laying the Groundwork for Lives Rebuilt.

Every lasting home begins with a foundation. For single women and families in crisis, that foundation is safety, stability, and a clear route to a front door they can call their own.

The FOUNDATIONS PROJECT is our blueprint to deliver exactly that—purpose-built spaces, essential services, and a predictable, dignified journey from first night to new keys.

These are not simply new buildings, they are the structural system that carries families from instability to independence. With your leadership, we will pour the footing, raise the frame, and open the door—Building. Pathways. Home.



Explore Our
New Buildings



WHEN WE REBUILD

A Purpose-Built Center for Women & Families



Dignified, Capacity-Optimized Shelter

Trauma-informed design with privacy, security, and restorative sleep—so parents, children, and single women can stabilize quickly and focus on work, school, and housing. Adds 112 additional short-term residential shelter beds over current capacity, increasing safe nights and reducing length of stay.



On-Site Integrated Health Clinic

Primary and preventive care (immunizations, well-checks, chronic-condition support) plus dental services and mental/behavioral health—reducing avoidable ER use and strengthening family wellness to sustain progress.

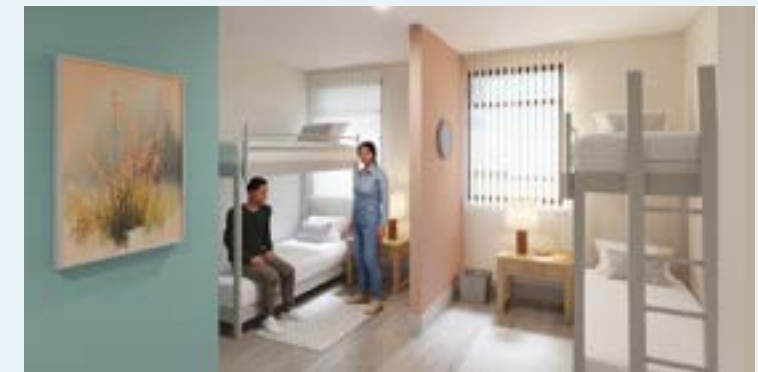
Modern Kitchen & Dining Hall

Scaled production to ~337,000 meals annually—reliable nutrition that fuels children and adults through the most demanding phase of transition while addressing food insecurity across the community.



Bridge Housing Units

A short, critical span between shelter and a lease. Adds 76 home-like beds that lower costs, reduce returns to shelter, and accelerate the path to a permanent address.





BUILDING. PATHWAYS. HOME.

Childcare & Youth Programs Expansion

Fully accredited on-site nursery and childcare services, plus after-school and enrichment programming—serving 40–50% more children—so parents can pursue work and housing while kids maintain school continuity and stability.



Rapid Rehousing + Landlord Partnerships

Dedicated housing specialists and owner relationships that convert applications to approvals—and approvals to signed leases—faster and with greater durability.



Outreach & Diversion

Proactive field teams and front-door problem-solving that divert families from entering shelter when safe alternatives exist, shortening the journey and protecting limited bed capacity.



Day Services Expansion

Increased capacity for showers, laundry, mail services, lockers, cooling/warming spaces, salon, and navigation—more same-day, low-barrier support that preserves dignity and keeps families moving forward.

The Nerve Center that Expands Service Capacity

By consolidating staff and volunteer teams under one roof, the PATHWAYS ADMINISTRATION CENTER becomes the operational backbone of the campus. Relocating back-office functions out of guest housing frees square footage for direct services, enabling more beds, more clinical touchpoints, and more family-facing programs.

In short: this building transforms overhead into impact infrastructure—strengthening the foundation so more women, children, and families can move confidently toward independence.

Together, these components form a single, load-bearing system: a foundation that supports every step from crisis to home.

The result is a stronger ecosystem of community partnerships, clearer accountability, and a measurable lift in throughput from first contact to stable housing.

PATHWAYS ADMINISTRATION CENTER





WHY NOW?

Replacing a Weak Link with a Strong Frame

Demand has risen while an aging facility constrains throughput. Without expanded, up-to-date space and services, families face costly detours—street, ER, shelter, repeat. The FOUNDATIONS PROJECT replaces those weak links with an integrated, efficient structure that moves people forward faster—and keeps them there.



Results You Can Measure
From Footing to Finish Line

40-50% Increase in Overall Service Capacity

PEOPLE SERVED DAILY

~800 today ~1,160 tomorrow

With higher velocity and reduced length of stay enabled by a purpose-built center.

MEALS PRODUCED

~230,000 today ~335,000 tomorrow

Ensuring consistent nutrition during transition.

PERMANENT HOUSING PLACEMENTS

~2,823 today ~3,952 tomorrow

Rates powered by rapid rehousing and owner engagement.

YOUTH PROGRAMS

~91 today ~131 tomorrow

Going from 91 participants annually to 131 participants annually.

NURSERY & CHILDCARE PROGRAM

~37 today ~54 tomorrow

Increasing from 37 participants to 54 participants.

Healthcare Access

On-site clinic reduces avoidable ER visits and calls to Emergency Services by 50% and improves family wellness, both mentally and physically.

Translation: fewer interruptions, stronger stability, and more families crossing the threshold into permanent homes.

From Unstable Ground to a New Address

Imagine a mother and her toddler arriving after nights in a car—exhausted, uncertain, but determined. Within weeks: safe sleep, reliable meals, a checkup at the clinic, and a housing specialist who opened doors with a landlord partner. Soon after: a signed lease, a furnished room, a child enrolled in school. That is what a solid foundation makes possible: momentum you can build on.

A FAMILY REFRAMED



Listen to the stories of Erin and AJ



INVESTMENT & PARTNERSHIPS

Strengthening the Foundation of a Region

Your leadership capital funds the full campus build-out—constructing the new Center for Women & Families and the Pathways Administration Center—while scaling the services that turn crisis into long-term stability. This investment stands up the on-site clinic; expands kitchen and dining to ~337,000 meals annually; deploys 32 units of bridge housing; and grows childcare and youth programs to serve 40–50% more children. It also increases day-services capacity and outreach/diversion to preserve beds for the highest need.

The return compounds across systems: lower public costs, shorter shelter stays, higher family stability, improved school attendance, and healthier, safer neighborhoods. By centralizing staff and volunteers in the Pathways Administration Center—unifying data, critical operational support, and partner coordination—your gift converts overhead into impact infrastructure. This is Building. Pathways. Home. that pays forward—for generations to come.

Name the Work. Power the Impact.

- Foundational Gifts: Underwrite core systems (clinic, kitchen/dining, bridge housing).
- Naming Opportunities: Facilities, program areas, family spaces, and campus features.
- Corporate & Philanthropic Partnerships: Workforce pipelines, volunteer programs, and in-kind professional services.
- Public-Sector Alignment: A direct lever for community health, safety, and economic mobility.

Join our Partners

MORGAN & MORGAN
DISNEY WORLDWIDE SERVICES INC
BEZOS FAMILY FOUNDATION
TRUIST
WELLS FARGO
EA SPORTS
ADVENTHEALTH



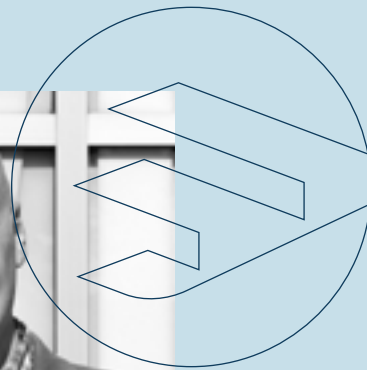
STRATEGIC LOCATION



Built in the Heart of Orlando

The new facilities rise on our downtown campus—close to transit, jobs, schools, healthcare, and partner agencies—so each service is one connected system rather than a scattered set of stops.

Proximity isn't incidental; it's part of the structural advantage.



“We are not simply building structures—we are engineering pathways towards independence. With the FOUNDATIONS PROJECT, families move from a night of uncertainty to the footing of a future they own. Join us in laying the foundation where hope becomes a home.”

— Brad Butterstein, President & CEO
The Coalition

Keep Building Forward.

Call to Leadership.

Primary Contacts

Brad Butterstein
President & CEO
P: 407-652-5270
Brad.Butterstein@cflhomeless.org

Dr. Leon Kirkpatrick
Director of the Capital Campaign
P: 407-927-0860
Leon.Kirkpatrick@cflhomeless.org

FoundationsProject.org





BUILDING. PATHWAYS. HOME.



Brad Butterstein
President & CEO
P: 407-652-5270
Brad.Butterstein@cflhomeless.org

Dr. Leon Kirkpatrick
Director of the Capital Campaign
P: 407-927-0860
Leon.Kirkpatrick@cflhomeless.org

FoundationsProject.org



0 6 . 2 0 2 6



CentralFloridaHomeless.org